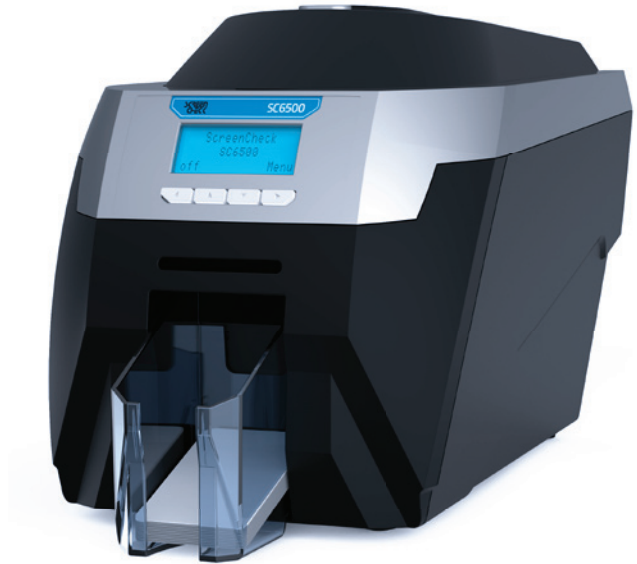


# SC6500

# SCREEN CHECK

## The professional's choice for secure card printing



### Secure

The SC6500 patented HoloKote® security technology adds a watermark to the card as it is printed- it requires no additional consumables and can be customised to an individual logo design- enabling true security at no extra cost. Secure encoding options include magnetic stripe and smart card technologies.

### Expert

Built for professionals, the SC6500 superior card printing quality is enhanced by ICC profiles that seamlessly map colours between software and the printer. The clear 4-line display provides intelligent user information and interaction.

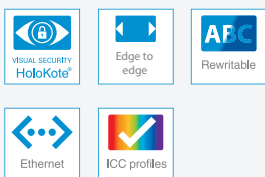
### Flexible

USB and Ethernet interfaces are complemented with a Microsoft-certified plug & play driver. Batch print with the interchangeable 100-card feeder or print one-offs or rewritable cards with the hand-feeder. Upgrade a single-sided SC6500 to double-sided printing using a simple in-field upgrade kit.

### Tough

Built with high performance purpose-built materials and advanced components, the SC6500 is designed and manufactured at Ultra Electronics' centre of excellence for manufacturing in the UK and is backed with the marketleading UltraCoverPlus™ warranty.

#### Standard features



#### Optional features



#### Free 2 year limited depot warranty\*

\*Available in the EU, North America and other selected territories. Elsewhere 1 year minimum limited depot warranty.



#### SC6500 is ideal for:

Enterprise identity applications.

[www.screencheck.com](http://www.screencheck.com)

## Printer highlights

<p><b>150</b> 1HR</p> <p><b>Printing speed</b> Up to 150 full colour cards per hour</p>	<p><b>100/70</b> (200/200)</p> <p><b>Card capacities</b> Standard: 100 input, 70 output Optional: 200 input, 200 output</p>	<p><b>3 YEAR UCP</b></p> <p><b>Warranty</b> 3 year UltraCoverPlus with hot swap printer</p>	<p><b>CUSTOM LOGO</b></p> <p><b>Visual security</b> Standard or Custom HoloKote® watermark</p>	<p><b>Windows   OS X</b></p> <p><b>Operating systems</b> Windows and Mac OS compatible</p>
---	---	---	--	--

## Printer specifications

### Print mode

Colour dye sublimation, monochrome thermal printing and rewritable technology

### Card security

A HoloKote security watermark can be printed across the card surface. When used with HoloPatch® cards, one area of the HoloKote watermark is highlighted as a high visibility security seal. A choice of 4 standard HoloKote designs and 1 standard custom design are selectable from the printer driver. For added security, Custom HoloKote® enables customisation of the watermark to an individual logo or security design.

### Encoding security options

Magnetic stripe encoding: HiCo and LoCo encoder ISO 7811, JIS2.  
Smart card encoding: Contact chip, MIFARE®, DESFire® and iClass®. Others available.

### Warranty\*\*

3 years UltraCoverPlus™ warranty and support which includes full printhead coverage and free loaner service - Available in North America, EU and other selected territories. Elsewhere 1 year minimum limited depot warranty.

### Printer interfaces

USB and Ethernet fitted as standard.

### Driver compatibility

Windows XP, Vista, 7, 8.1, 10 (32 and 64bit) Windows server 2003 R2 SP2, 2008, 2012, 2016. GNU/Linux and Mac OS X 10.9.0 upwards.

### Card capacity

100-card feeder, 70-card stacker.

### Weight

4.9kg (10.8 lbs).

### Power source

External power supply 100-240V 50-60Hz autoranging.

### Dimensions

470mm L x 220mm W x 250mm H (18.5" L x 8.6" W x 9.8" H) including feeder and stacker.

### Print speed

Colour fast mode (single-sided card): 23 seconds,  
Monochrome resin (single-sided card): 6 seconds.

### Operating environment

Sheltered office environment 10°C to 30°C (50°F to 85°F).

## Card security options

<p><b>HoloKote®</b></p> <p>A standard anti-counterfeiting watermark printed in a grid pattern across the entire card surface. The SC6500 HoloKote features 4 standard designs.</p>	<p><b>HoloPatch®</b></p> <p>HoloPatch cards have a highly reflective gold 'super diffuser' foil square that enhances the visibility of the overprinted HoloKote logo.</p>	<p><b>Custom HoloKote®</b></p> <p>A fully flexible and customisable anti-counterfeiting watermark printed across the entire card surface. 1 standard design included.</p>	<p><b>Magnetic stripe</b></p> <p>The SC6500 can be specified with ISO standard 7811 compatible HiCo encoding of magnetic stripe cards and JIS2.</p>	<p><b>Smart card encoding</b></p> <p>Smart card encoding options: Contact chip, Mifare®, Desfire®, iClass®.</p>
--	---	---	---	---

## Consumables

### Dye film

- YMCKO 5 panel dye film, 300 images.
- Monochrome resin black dye film, 1000 images. MA1000K-Black\*  
Also available in \*White, \*Blue, \*Red, \*Gold and \*Silver.
- KO black and overcoat resin dye film, 600 images.
- YMCKOK 6 panel dye film, 250 double-sided images,  
colour on front, black on back (double-sided only).

### Card types/thickness

CR80/CR79 PVC ISO blank cards, HiCo magnetic stripe, smart cards, self-adhesive, rewritable and HoloPatch cards. 0.51mm to 1.02mm (0.020" to 0.040").

### HoloPatch® cards

Use HoloKote with HoloPatch for a highly-visible gold seal on the card.

### Cleaning kit

10 cleaning cards, 1 pen.

### Cleaning roller kit

5 cleaning rollers, 1 metal roller bar.

## Variants

### SC6500

SC6500 Pro: single-sided printer.

### SC6500 Duo

SC6500 Duo: double-sided printer.

### Variants - call for part numbers

Magnetic stripe card encoding, combi smart card encoding (contact chip, MIFARE®, DESFire®, iClass®). Other smart card encoders also available.

## Options

### Double-sided upgrade

Upgrade the single-sided SC6500 to the SC6500 Duo.

### Custom HoloKote kit

Kit contains a CD to install the data and a Custom HoloKote card that fits into your printer.

/ScreenCheck\_

/ScreenCheckBV

/+Screencheckbv

/company/screencheck

