

SC7500



Secure photo-quality printing via an intuitive interface



Best quality printing

The SC7500 uses a retransfer printing process, where images are first printed onto a thin film then heat transferred onto the card surface. This produces a high resolution photo quality image, printed over the edge of the card

Intuitive

An intuitive touch screen, with print preview and supplies indicators, provides an easy-to-use interface to an advanced and durable print engine, powered by a high grade processing unit and boasting an impressive array of features.



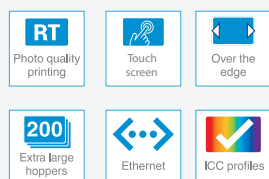
Built-in security

SC7500 is the World's first retransfer printer with built-in visual security, with the ability to apply a secure watermark to each card during the retransfer process. This feature also exploits the wavelengths of the film to fluoresce under UV lighting conditions.

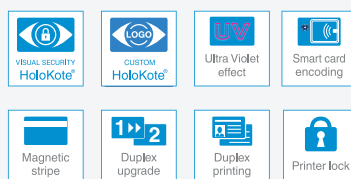
High capacity

High capacity consumables (1000 prints) and hoppers, combined with a range of encoding options to write secure electronic data to the card, make the SC7500 ideal for high volume localised or centralised issuance of secure smart cards

Standard features



Optional features



Free 3 year limited depot warranty*

With hassle-free printhead cover and loaner service. (Available in the EU, North America and other selected territories. Elsewhere a minimum of 1 year limited depot warranty.)



SC7500 is ideal for:

Corporate, payments and government identity applications.

Printer highlights

<p>Printing speed Up to 125 full color cards per hour</p>	<p>Card capacities 200 card input 200 card output</p>	<p>Warranty 3 year UltraCoverPlus with hot swap printer and lifetime printhead cover</p>	<p>Visual security Standard or Custom HoloKote watermark with UV effect</p>	<p>Windows OS X</p> <p>Operating systems Windows and Mac OS compatible</p>
--	--	---	--	---

Printer specifications

Printer technology

300dpi retransfer, 256 color depth level (8Bit) with automatic card feed system.

HoloKote® card security

HoloKote built-in security watermark is printed across the entire card surface, this feature also exploits the wavelengths of the film to fluoresce under UV lighting conditions. Available with 10 watermarks as standard, any of these watermarks can be replaced with your own customised design or company logo through an easy-to-use, but securely encrypted, online delivery method. HoloKote printing requires the use of secure dye film (YMCKS).

Encoding security options

Magnetic stripe: HiCo and LoCo encoder ISO 7811, JIS2. Smart card encoding; ISO 7816, EMV contact chip, MIFARE®, DESFire®, iClass® and others.

Warranty*

3 years UltraCoverPlus™ warranty and support with hot swap printer and lifetime printhead cover- Available in North America, EU and other selected territories. Elsewhere a minimum of 1 year limited depot warranty.

Printer interfaces

Internal 4 port USB HUB (1.1). (1x WiFi option, 1x encoder option, 1x Micro SD option, 1x unassigned).

Compatibility

Windows XP, Vista, 7, 8.1, 10 (32 and 64bit) Windows server 2003 R2 SP2, 2008, 2012, 2016. GNU/Linux and Mac OS X 10.9.0 onwards.

Card capacity

200 card feeder, 200 card stacker.

Weight

14.4kg (31.7 lbs)

Power source

External power supply 100-240V 50-60Hz autoranging.

Dimensions

330mm L x 455mm W x 420mm H (13" L x 17.9" W x 16.5" H)

Print speed

Color: up to 125 cards per hour

Operating environment

Sheltered office environment 10°C to 30°C (50°F to 85°F).

Consumables

SC7500 HoloKote® dye film

- YMCKS Secure HoloKote® dye film, 750 images
- YMCKS Secure HoloKote® film set (4 YMCKS and 3 RT films), 3000 images

SC7500 dye film

- YMCK dye film, 1000 images
- YMCKK dye film, 750 images
- 4 x YMCK dye film and 4 x RT film set, 4000 images

SC7500 retransfer film

- Retransfer film, 1000 images

Cleaning kit

10 pads and cards.

Card types/thickness

Card sizes: ISO CR80 85.6mm x 54mm / 3.375" x 2.125" Card types: PVC, PET, PC, PVH, ABS. Card thickness: 0.51mm to 1.3mm / 0.020" to 0.050"

Variants

SC7500 Uno

Single-sided ID card printer.

SC7500 Duo

Double-sided ID card printer

Variants (Mag, Smart or Smart Mag) - call for part numbers

Magnetic stripe card encoding, combi smart card encoding (contact chip, Mifare®, Desfire®, iClass®). Other smart card encoders also available.

Options

Double-sided upgrade

Upgrade the single-sided SC7500 to the SC7500 Duo.

Laminator

Available soon.

Card security options



HoloKote®

A standard security watermark printed across the entire card surface. The SC7500 HoloKote features 10 standard designs.



Custom HoloKote®

A fully flexible and customisable secure watermark printed across the entire card surface.



Magnetic stripe

The SC7500 can be specified with ISO standard 7811 or JIS2 compatible HiCo encoding of magnetic stripe cards.



Smart card encoding

Smart card encoding options: Contact chip, Mifare®, Desfire®, iClass®.



/ScreenCheck_

/ScreenCheckBV

/+Screencheckbv

/company/screencheck

